



rethinking
CRIME AND PUNISHMENT

Keeping the Community Safe





Building a Safe Community



Moran Whanau
Irish Catholic



Justin
Te Ati Awa
Ratana



Lucas Whanau
Greek Orthodox



**El Sayed Whanau
Lebanese Muslim**



Matiu
Te Arawa/Ngati Tuwharetoa
Anglican



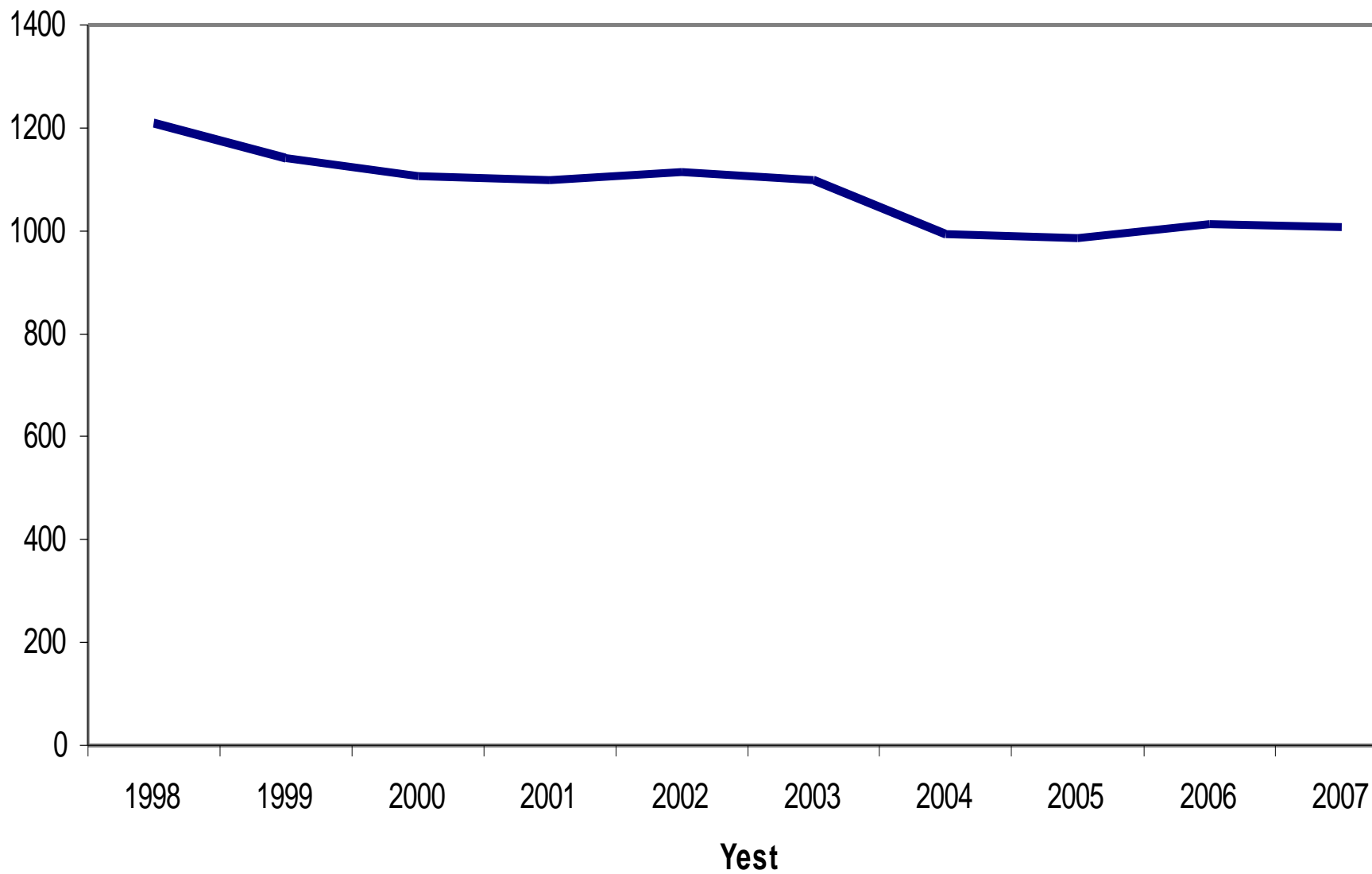
**Wiremu
Ngati Kahungunu/Ngati Porou
Staunch Pentecostal**



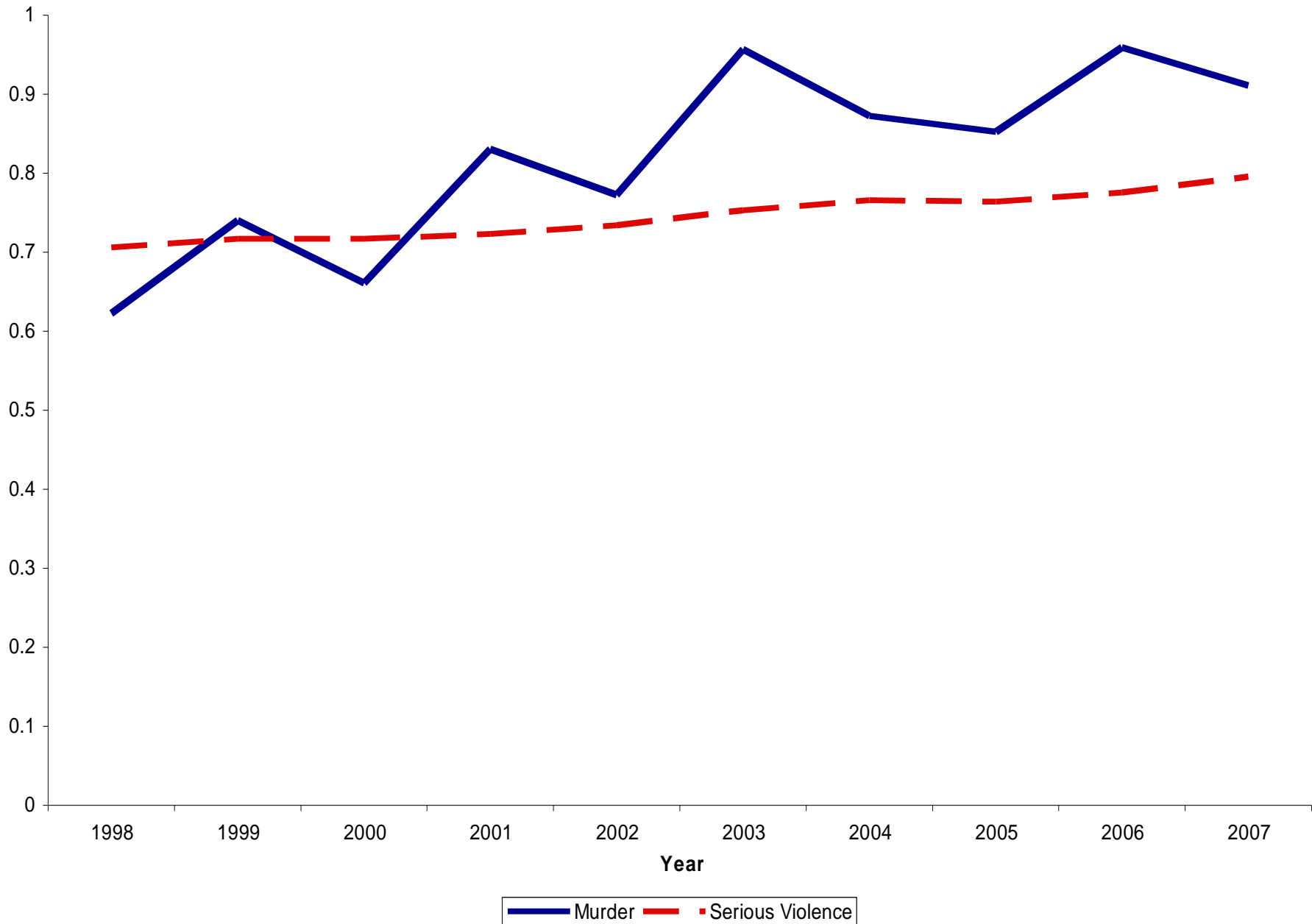
- How safe are our children now?
- How safe will they be in 10 or 20 years time?
- What can we do to build community safety?



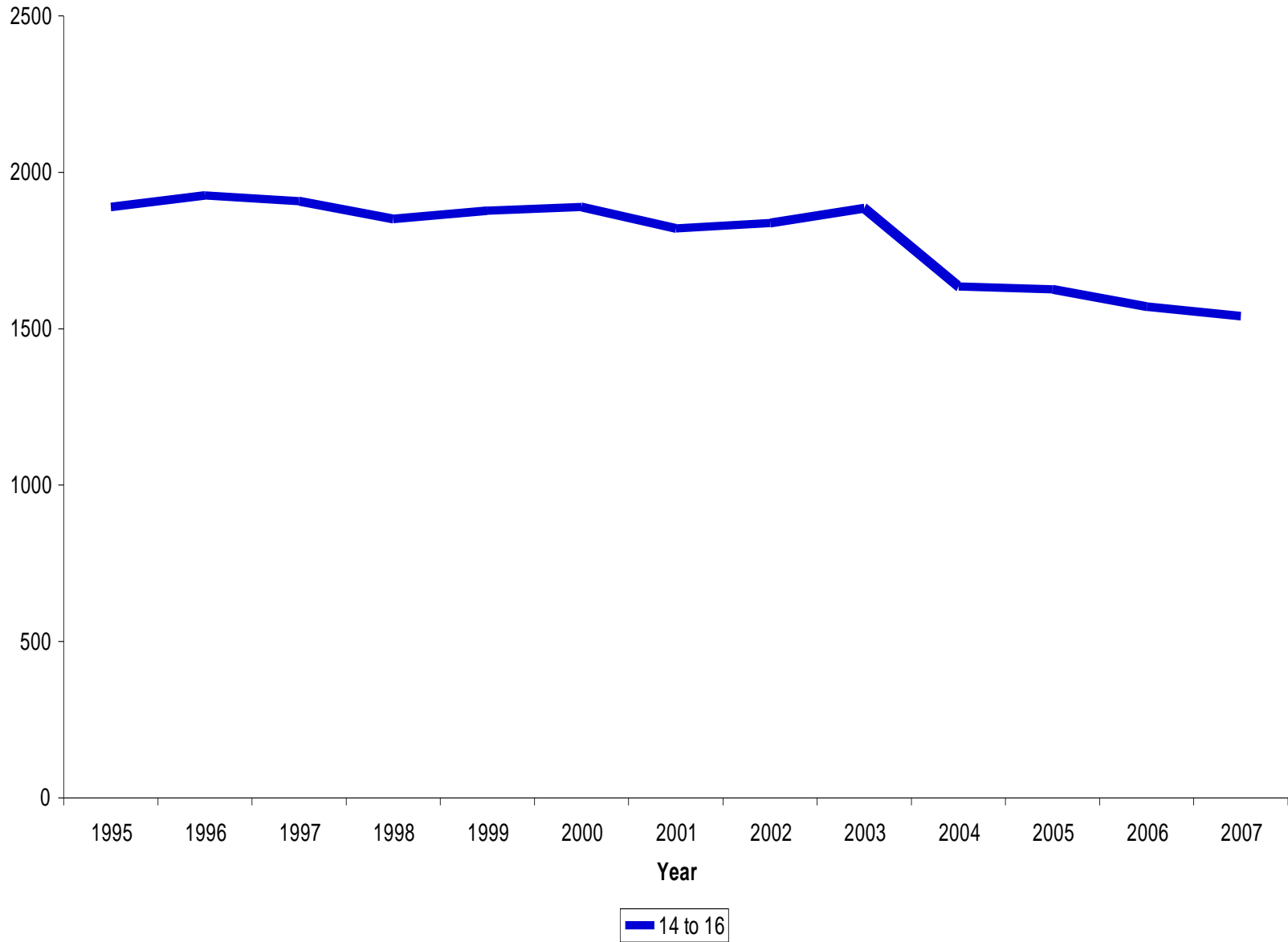
Recorded Offences per 10,000 population



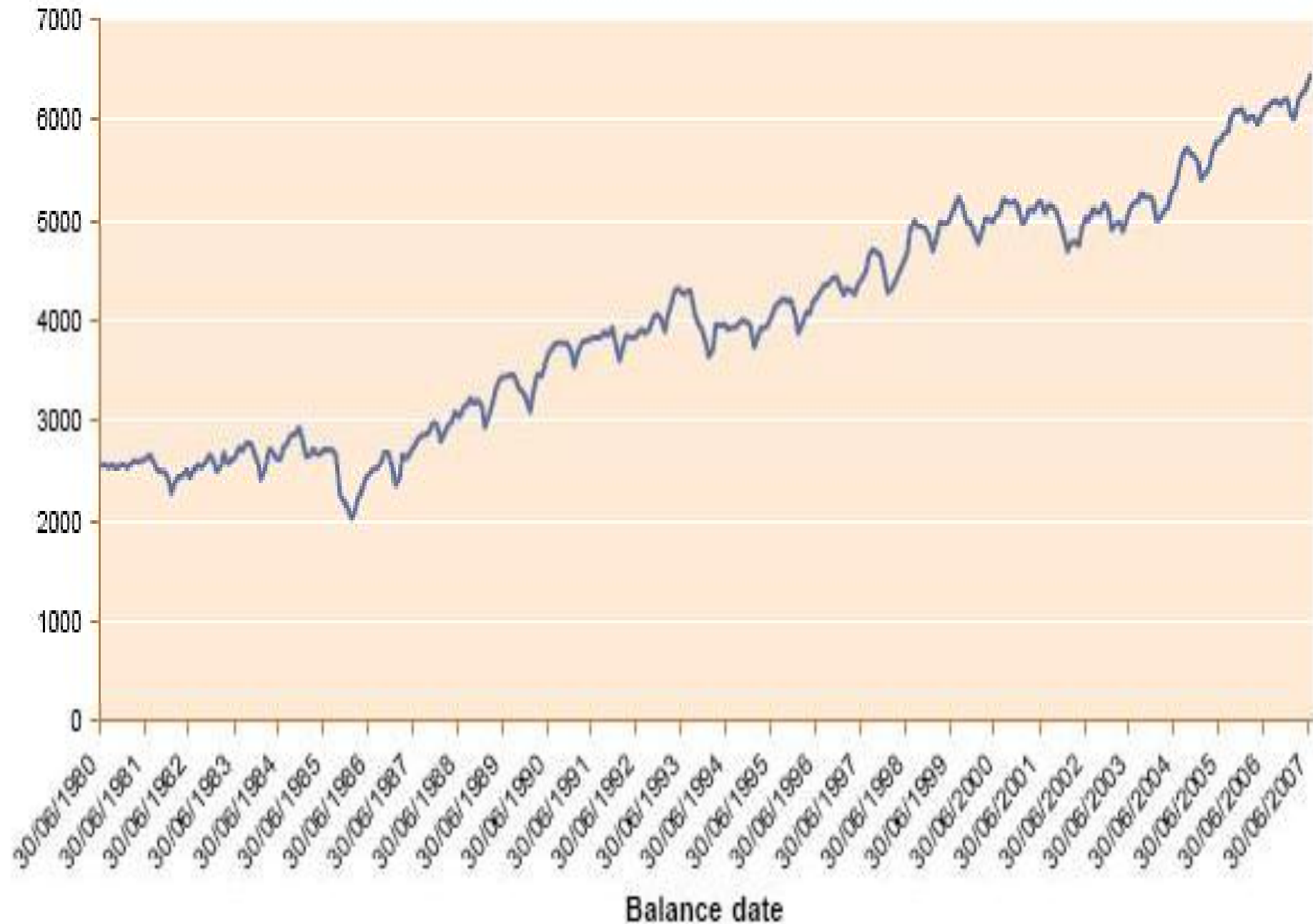
Police Resolution percentages for murder and serious violence 1998-2007



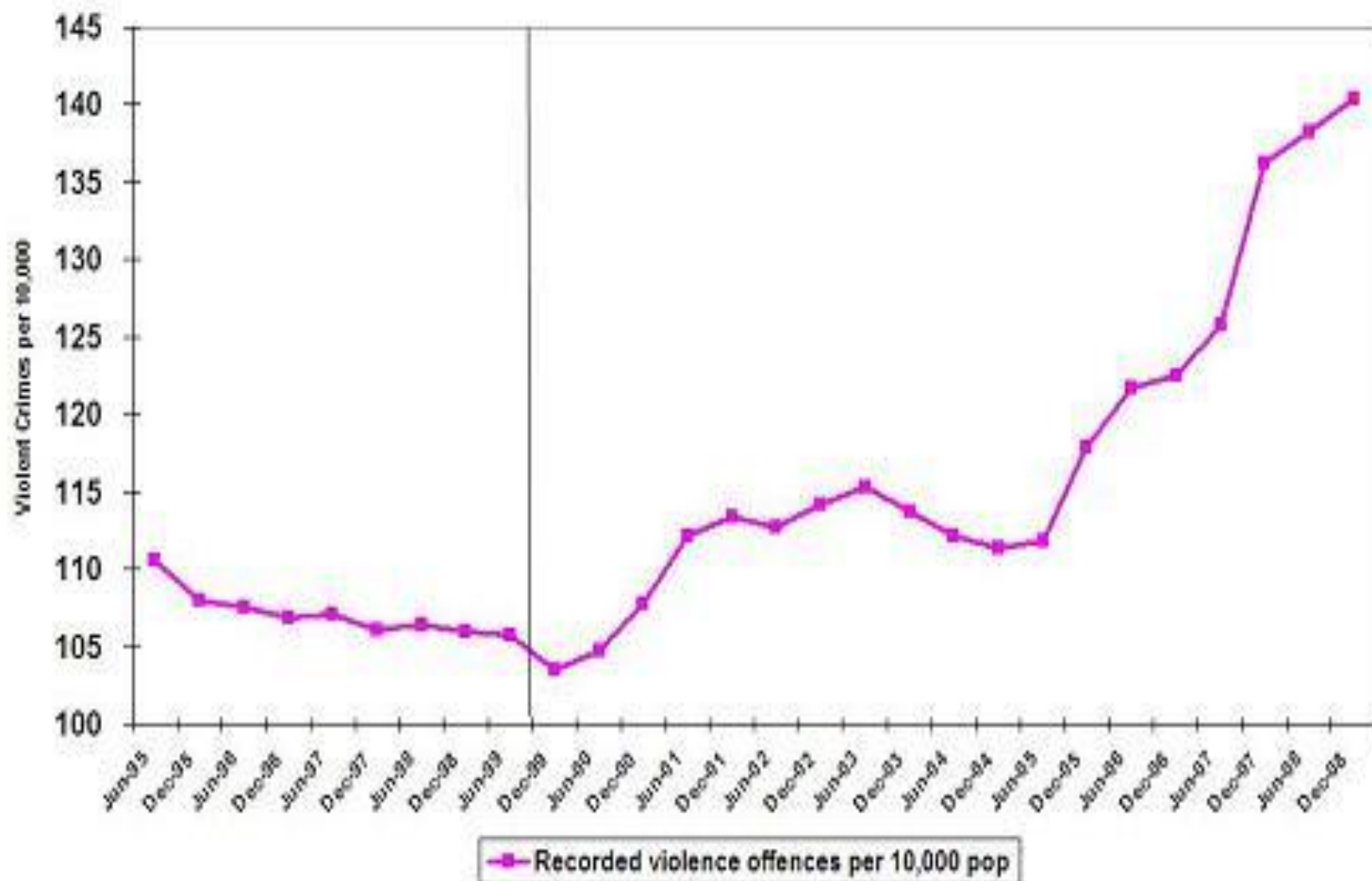
**Police apprehension rates per 10,000 population by age groups for all offences 1995
2007:**



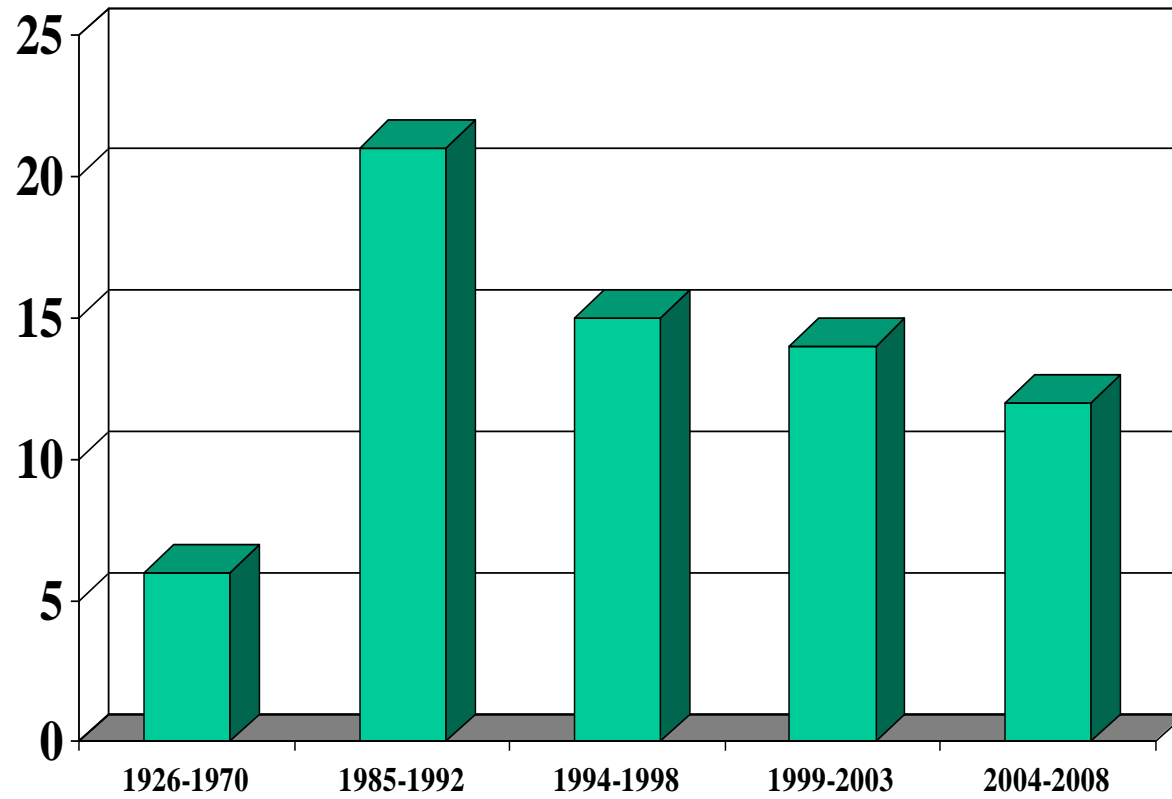
Prison sentenced offenders on balance date



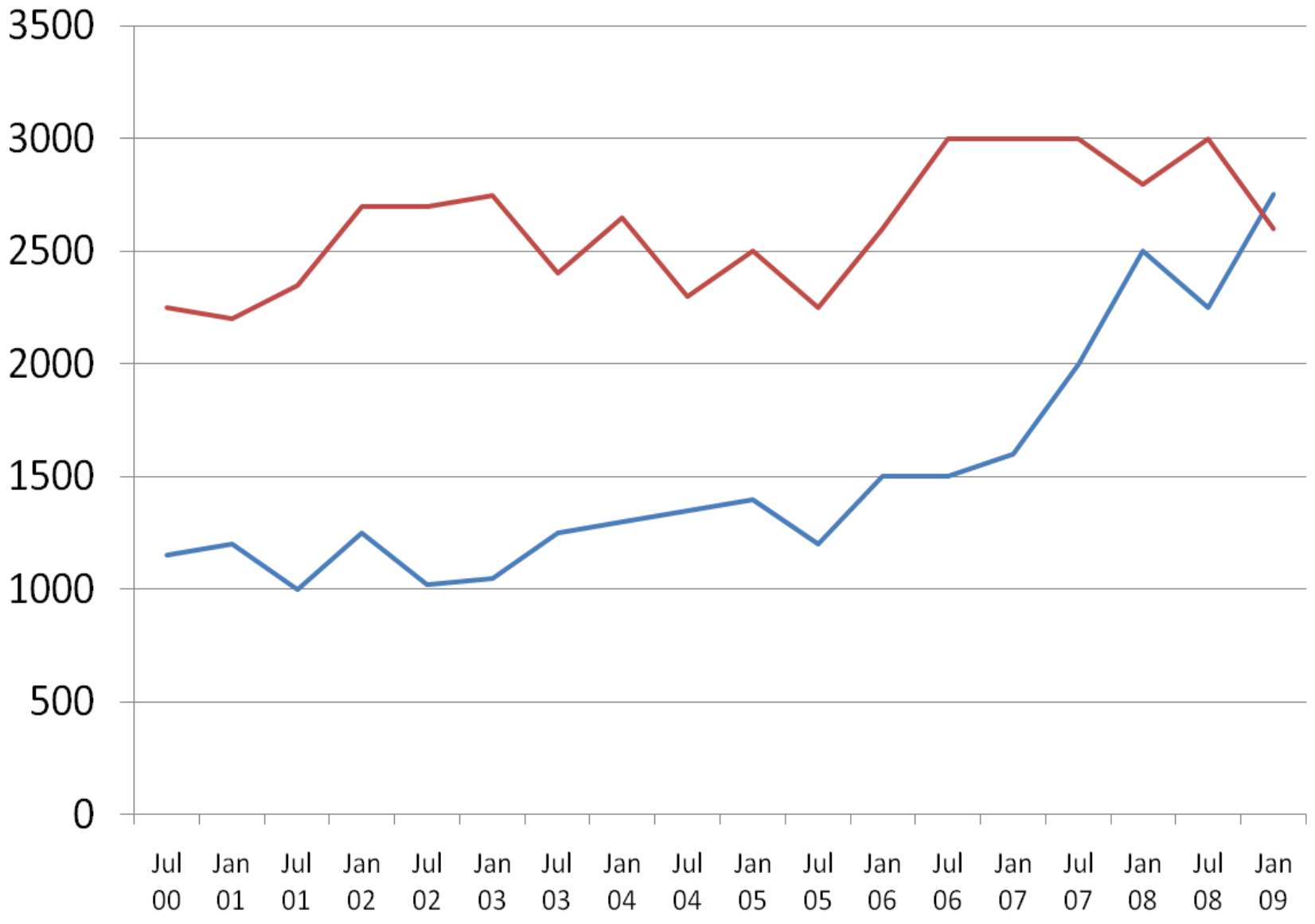
Violent Crime Rate



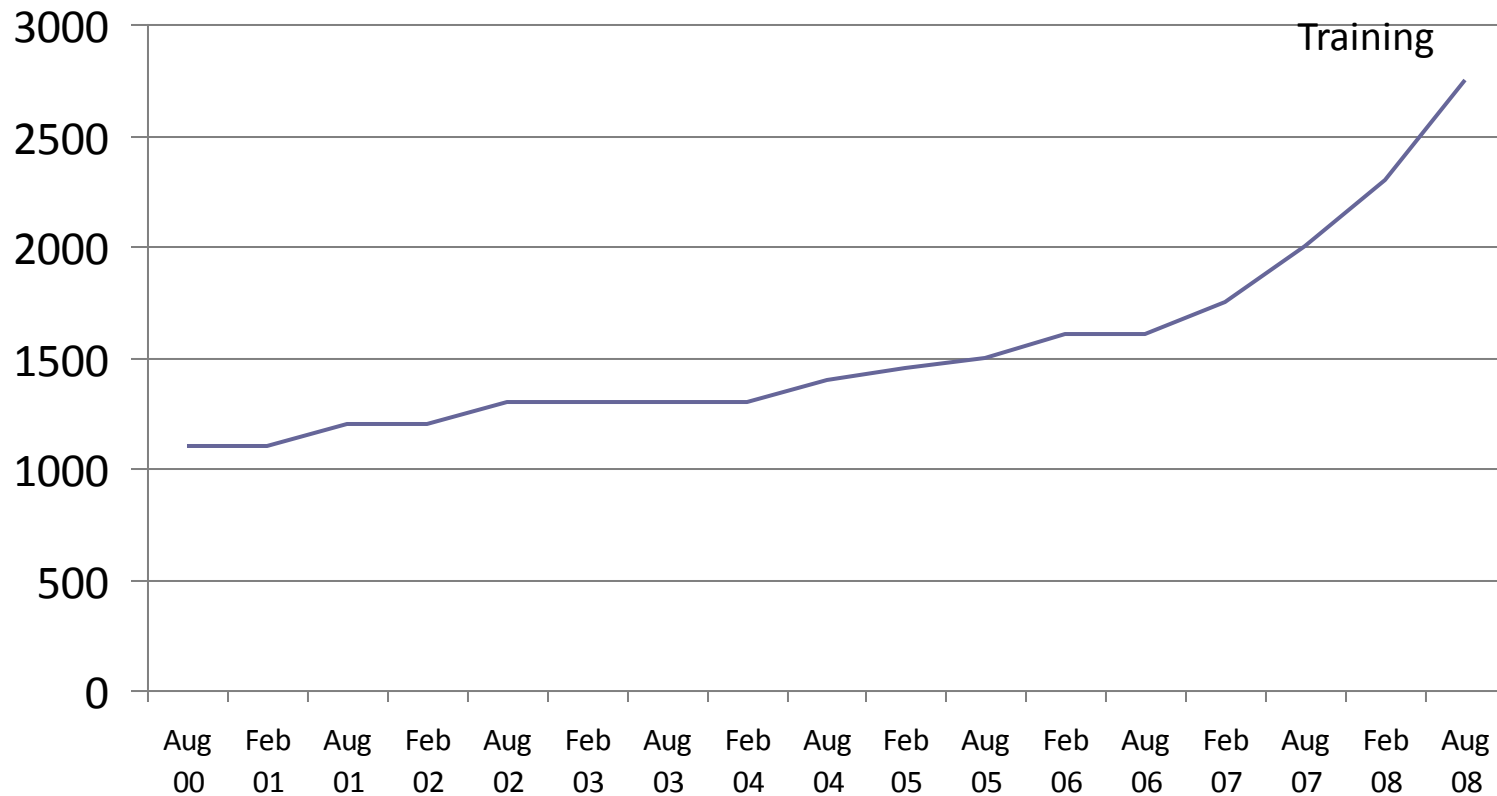
Annual Murder Rate (per million people)



FV Offences Non FV Offences



MA(3) Deseasonalised (FV)





IT IS



**TO ASK
FOR
HELP**

| 0800 456 450

| www.areyouok.org.nz



Reducing Family Violence

- Individual Factors
- Societal Factors
- Address Victims Needs
- Promote Healthy Communities



-B.D.Y.-



CRI



BEATERz.COM

What Doesn't Work

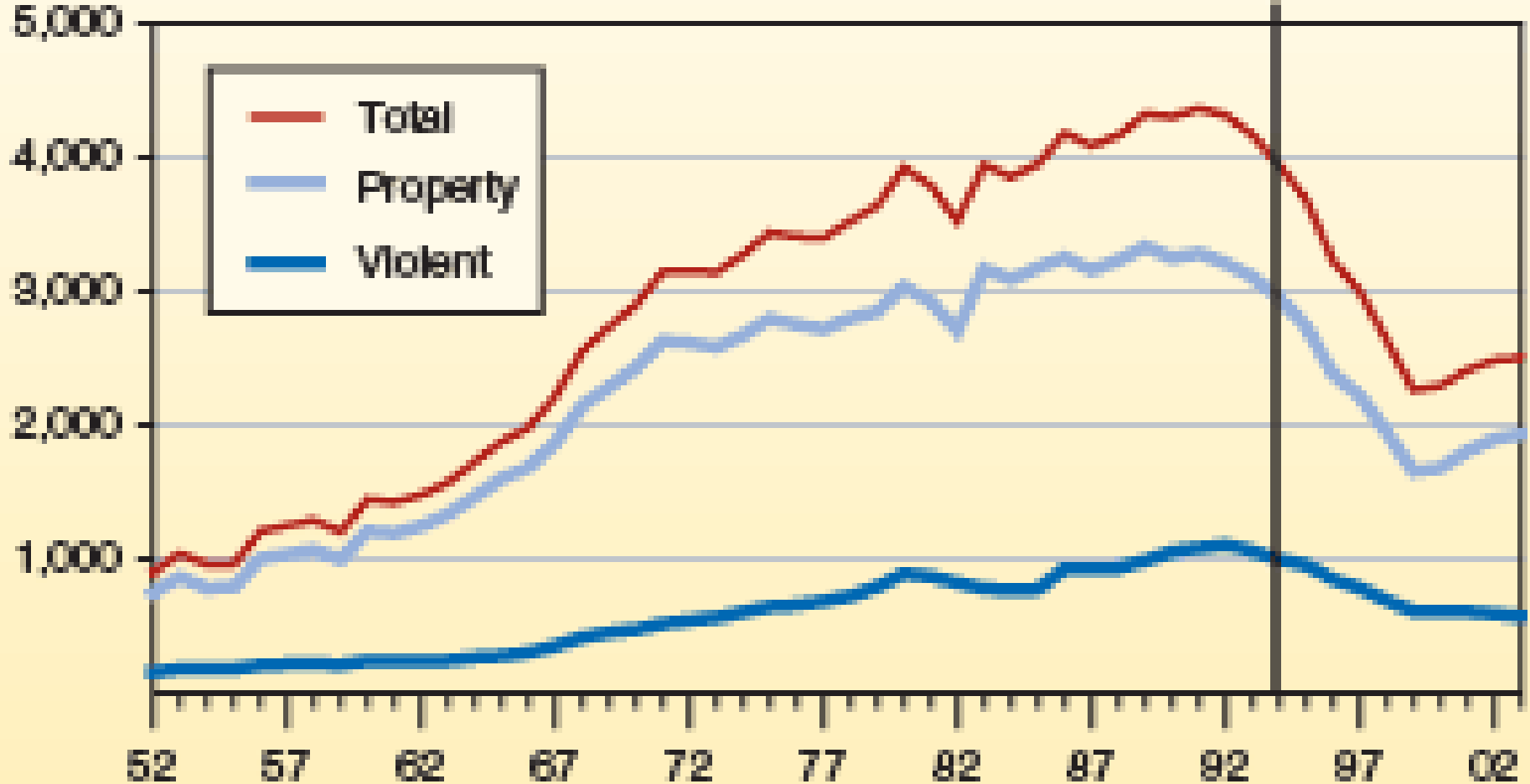
- “Getting tough” interventions (boot camps, scared straight, shock probation, paramilitary training) almost always fail. Punishment and detention are not effective forms of rehabilitation
- The greatest change in expected re-offending rates for persistent offenders was not achieved through deterrent sentencing. Likelihood of re-offending increases 25% after a deterrent sentence.

Figure 9

California Crime Rate Rate Per 100,000 Population

1952-2003

1994: Implementation
of Three Strikes Law





Drivers of Crime

MINISTERIAL MEETING



Drivers for Crime

Minister of Justice – Hon Simon Power

“For too long, the debate has been fixated on how we deal with offenders after the fact. We need to change that. Now it’s time to commence a discussion about how we stop crime happening in the first place”.



Drivers for Crime

1. Maternity and early parenting support services
2. Address conduct and behavioural problems in childhood
3. Reduce the harm from alcohol
4. Alternative approaches to manage low-level offenders



Drivers for Crime

1. Maternity and early parenting support Earlier Interventions more cost effective than later interventions, but the impact on crime and victimisation takes longer.
2. Later interventions are generally more difficult and costly but can have an impact in the shorter term
3. We have a three year election cycle.
4. Go figure.



What Can We Do About It?

1. Insist that all interventions :
 - Be Evidence based
 - Are likely to be effective
 - Are Value for Money
2. Require government to invest over the long term in 'drivers of crime'
3. Actively oppose legislation and programmes that don't reduce reoffending, aren't value for money, or breach human rights
4. Advocate for a long term criminal justice strategy